

PRODUCT INFORMATION PACKET

marathon®
Motors

Model No: 056C34D2102
Catalog No: J035
(USE 5KC39QN3219X) 3/4,3450,DP,56J,1/60/115/230
Jet Pump Motors



Regal and Marathon are trademarks of Regal Rexnord Corporation or one of its affiliated companies.
©2021 Regal Rexnord Corporation, All Rights Reserved. MC017097E

RegalRexnord



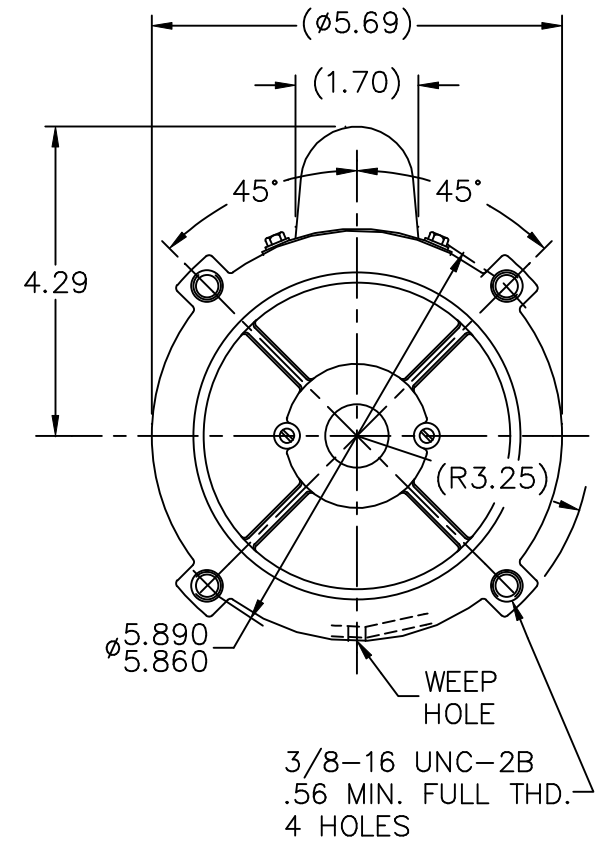
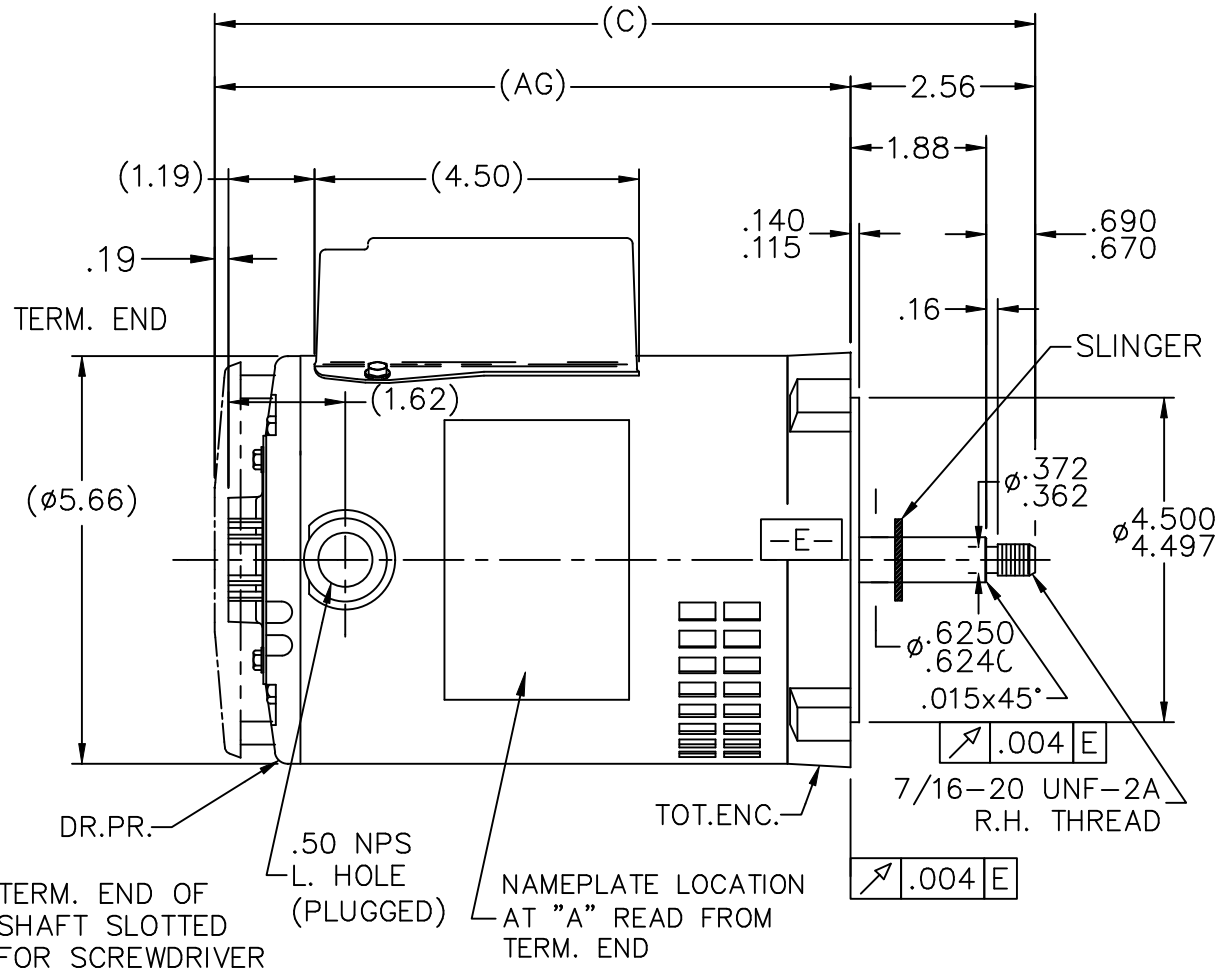
Nameplate Specifications

Output HP	0.75 Hp	Output KW	0.56 kW
Frequency	60 Hz	Voltage	115/208-230 V
Current	9.8/4.8-4.9 A	Speed	3450 rpm
Service Factor	1.5	Phase	1
Efficiency	70 %	Power Factor	74
Duty	Continuous	Insulation Class	B
Design Code	No Design Code	KVA Code	J
Frame	56J	Enclosure	Drip Proof
Thermal Protection	Automatic	Ambient Temperature	40 °C
Drive End Bearing Size	6203	Opp Drive End Bearing Size	6203
UL	Recognized	CSA	Y
CE	Y	IP Code	22
Number of Speeds	1		

Technical Specifications

Electrical Type	Capacitor Start Induction Run	Starting Method	Across The Line
Poles	2	Rotation	Fixed Clockwise
Resistance Main	0 Ohms	Mounting	Round
Motor Orientation	Horizontal	Drive End Bearing	Ball
Opp Drive End Bearing	Ball	Frame Material	Rolled Steel
Shaft Type	T	Overall Length	11.63 in
Frame Length	7.00 in	Shaft Diameter	0.625 in
Shaft Extension	1.88 in	Assembly/Box Mounting	F1 Only
Outline Drawing	A-SS75936-700	Connection Drawing	A-EE9002V

This is an uncontrolled document once printed or downloaded and is subject to change without notice. Date Created:10/11/2021



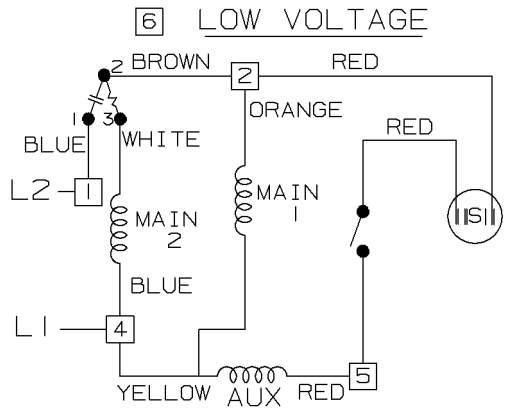
DASH	C	AG	DASH	C	AG	DASH	C	AG
625	10.88	8.31	700	11.63	9.06	775	12.19	9.62
650	11.13	8.56	725	11.88	9.31			
675	11.38	8.81	750	12.13	9.56			

NO.	REVISION	BY & DATE	CHK	ANG	TOLERANCES UNLESS SPECIFIED	FINISH	PREV
7	UPDATED DRAWING	TJW 04/20/2007					
6	ADDED DRIP COVER	CN 39071	NJS	03-17-2005	ML	DEC. INCHES	
5	REDRAWN IN AUTOCAD		TAT	07-13-2004	ML	.X ±.1	
4	REMOVED DRIP COVER	CN 34676	CTO	01-25-2002	DRS	.XX ±.03	
3	ADDED .015X45° CHAMFER	CN 23026	MRB	10-11-1996		.XXX ±.005	
2	ADDED NEW REAR BRACKET	CN 20124	RJM	04-04-1995		.XXXX ±.0005	
						MAT'L.	
						FINISH	

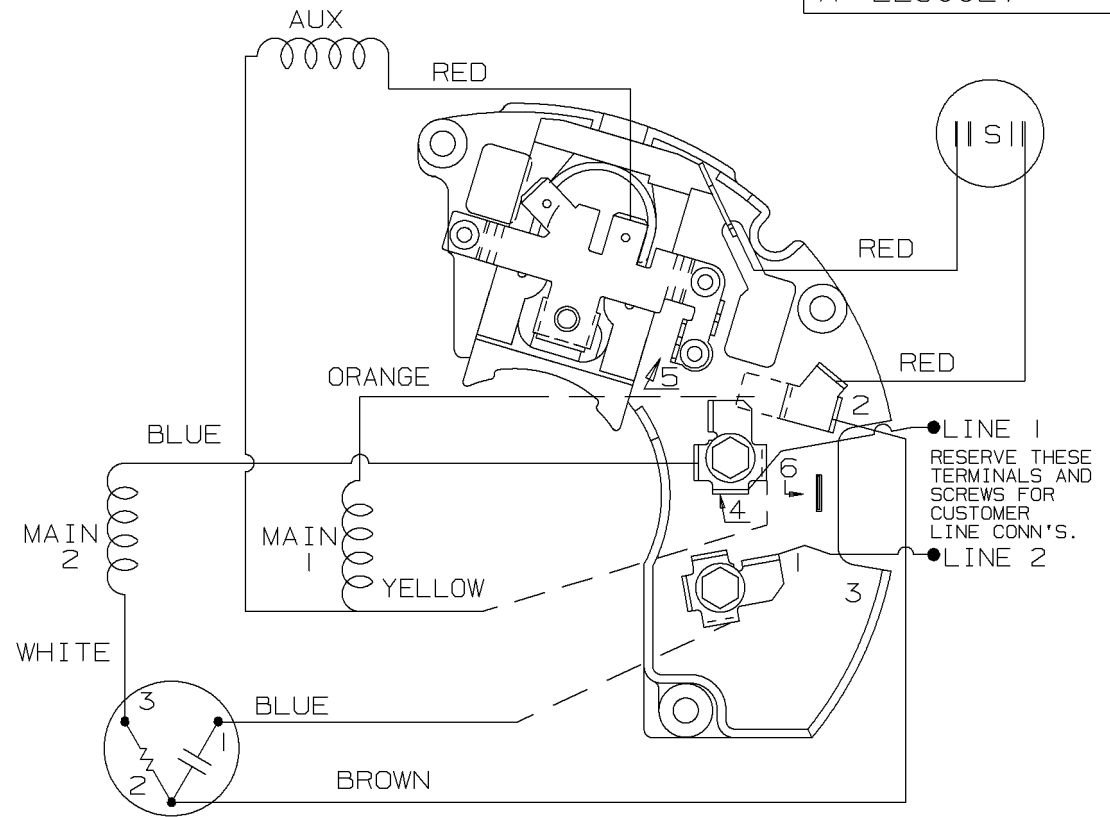
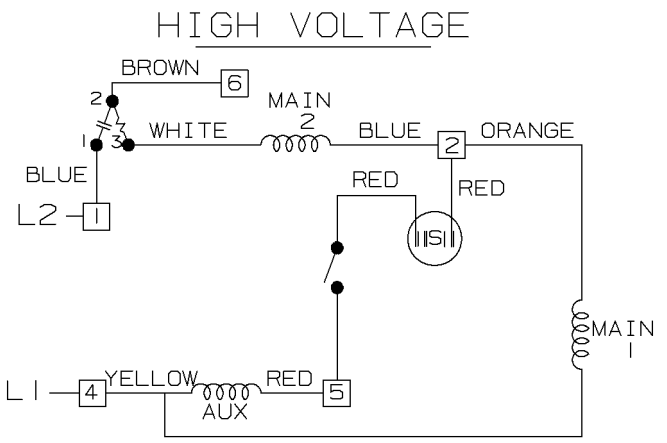
THIS DRAWING IN DESIGN AND DETAIL IS OUR PROPERTY AND MUST NOT BE USED EXCEPT IN CONNECTION WITH OUR WORK ALL RIGHTS OF DESIGN AND INVENTION ARE RESERVED THIS IS AN ELECTRONICALLY GENERATED DOCUMENT - DO NOT SCALE THIS PRINT				RFP	CAD FILE ss75936	SIZE A	DRAWING NO. SS75936	PAGE OF	REV. 7
				DIST WP					



DRAWN KL 09-27-1993
 CHK MOL 09-28-1993
 APPD GK 09-28-1993
 SCALE 3=8
 REF
 FMF
 PREV



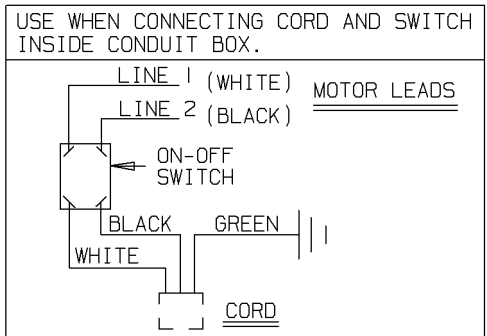
DUAL VOLTAGE
CAP. START NOT REVERSIBLE
WITH OVERLOAD PROTECTION.



VIEWING TERM END

LOW VOLTAGE CW ROTATION SHOWN.
FOR HIGH VOLTAGE
CONNECT BROWN TERM 2 TO TERM 6.
CONNECT BLUE TERM 4 TO TERM 2.

DASH LINES INDICATE LEADS CONNECTED TO MOTOR SIDE OF SWITCH.



3	01-28-1991	REVISED LINE 2 LOCATION	RM	✓ MAX. SURFACE ROUGHNESS UNLESS NOTED OTHERWISE	UNLESS OTHERWISE SPECIFIED DIMENSIONS ARE IN INCHES TOL. ON XX± XXX±.005 XXXX±.0005 ANGLES±
2	01-04-1991	ADDED CORD - SWITCH CONNECTION	SMC	MATL SPEC	DRAWN BY SMC 12-11-1990
1	112-11-1990	NEW DRAWING	SMC	FINISH	CHKD BY ML 12-11-1990
REV	DATE	CHANGE	NAME	PART NAME CONNECTION DIAGRAM 48 FR. DUAL VOLTAGE NOT REVERSIBLE	APPD BY GK 12-11-1990 DRWG NO A-EE9002V



ERROR: syntaxerror
OFFENDING COMMAND: --nostringval--

STACK:

/im
-savelevel-